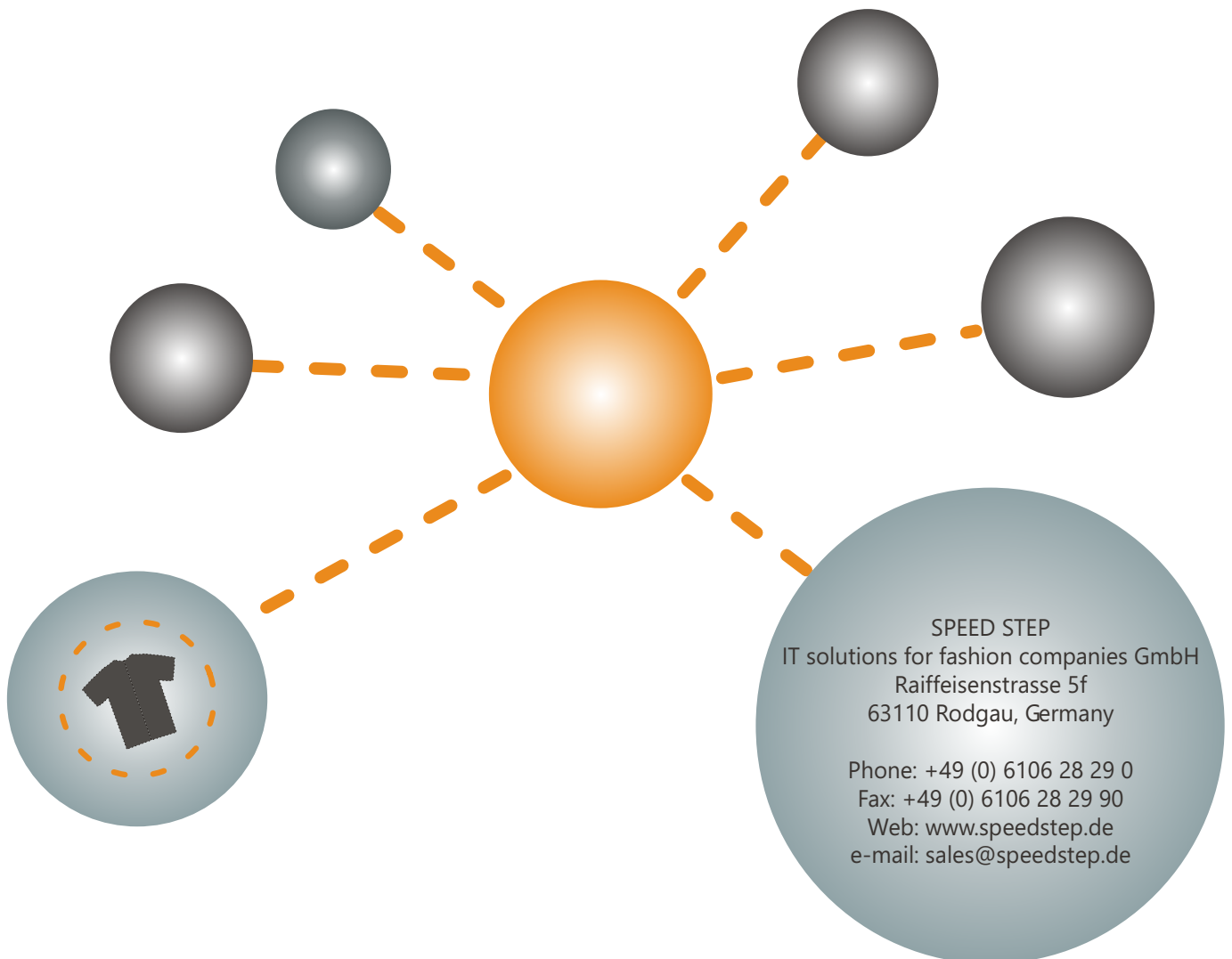
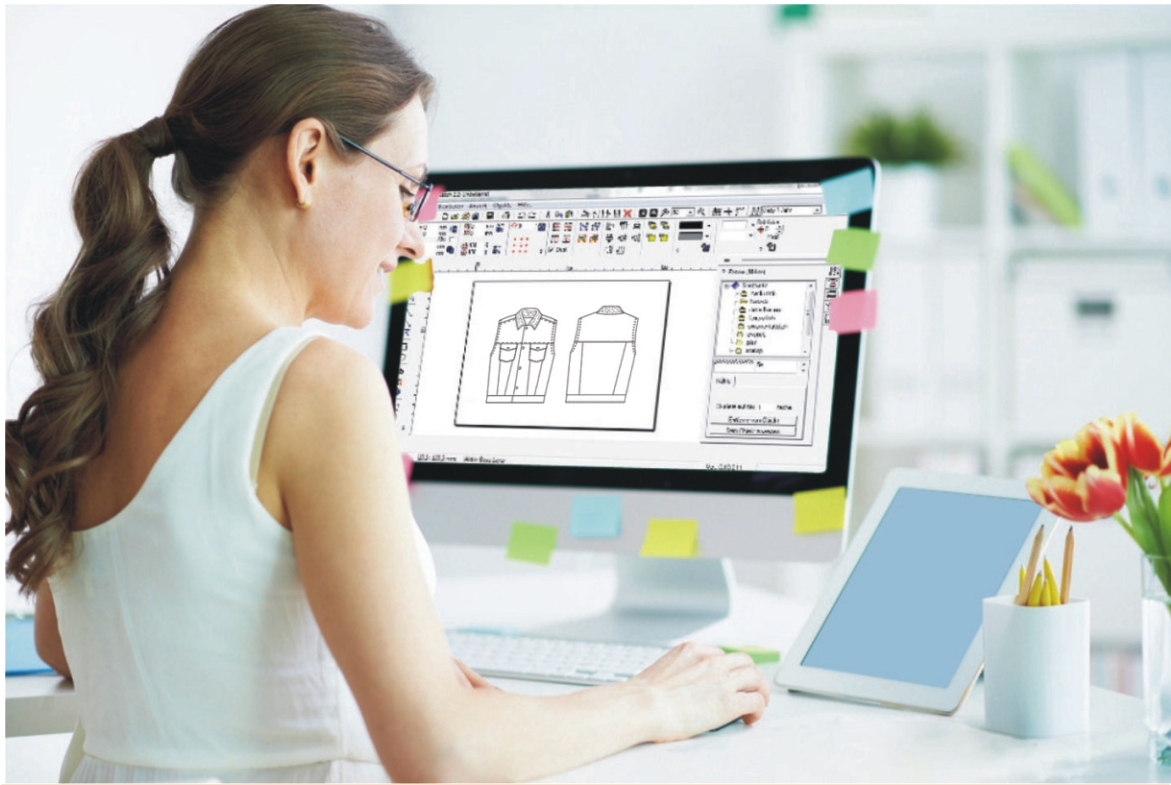


SPEED STEP SKETCH



SPEED STEP Sketch® developed by Speed Step's team of stylists and software engineers, is the first 100% vector drawing software designed specifically to fit the work flow requirements of the garment industry. Its powerful drawing tools, library functions and well organized interface allow you to quickly and accurately create new styles, or modify and reuse existing drawings. This eliminates the need to copy or redraw your sketches and technical drawings again and again. You can add dimensions with tables to your drawing which relate to the size specification for the garment. When you are working in scale you can automatically add the measurements directly to your drawing. If you are using **SPEED STEP Sketch®** in conjunction with **SPEED STEP PDM®**. Our own products data management software, you can even integrate production instructions and costing information.

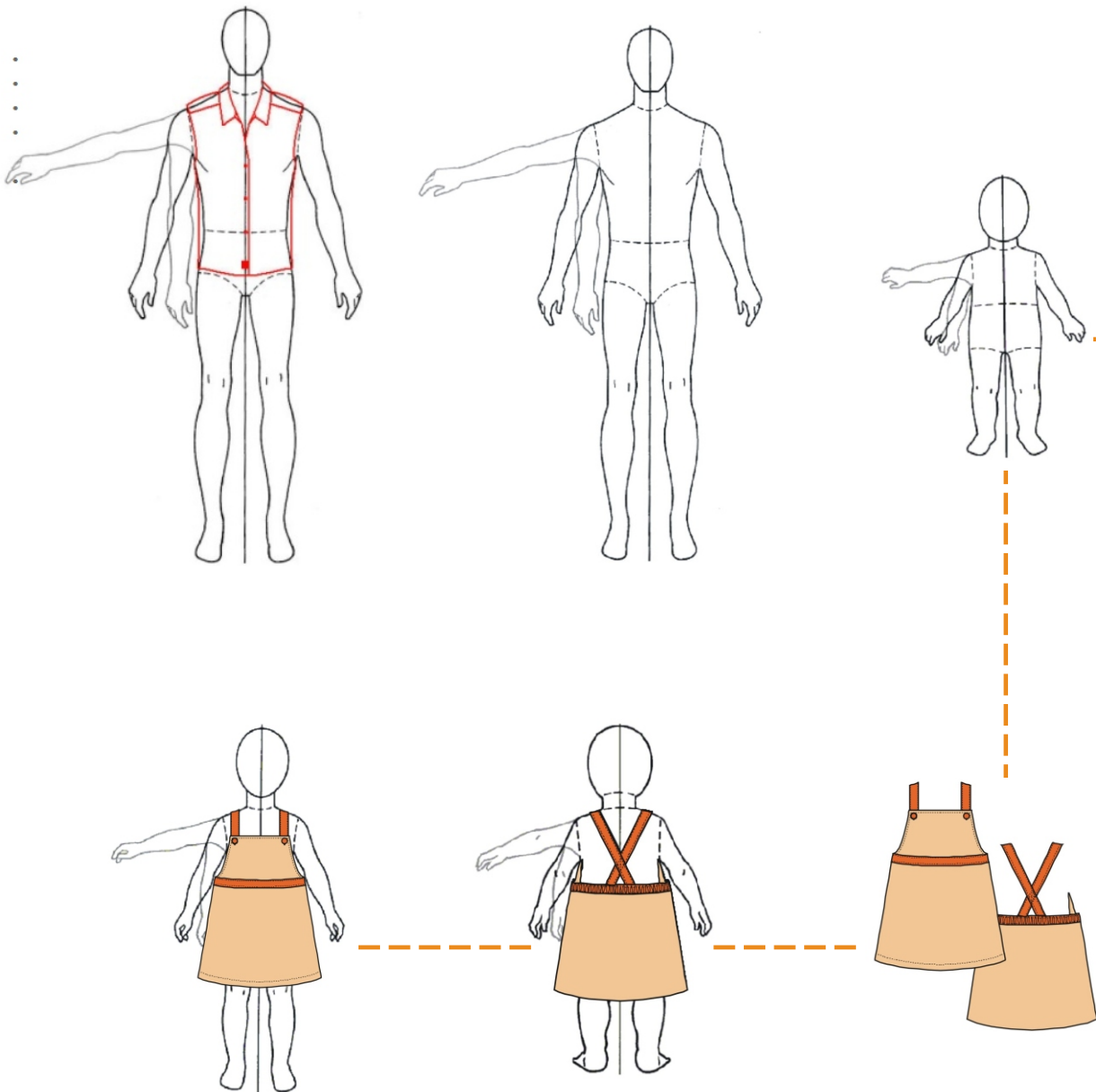


- ✓ User friendly drawing tool
- ✓ Croquis templates
- ✓ Pattern / Stitches library
- ✓ Layers
- ✓ Dimension / Segmenting options
- ✓ Techpack creations

Features

Creating and modifying drawings

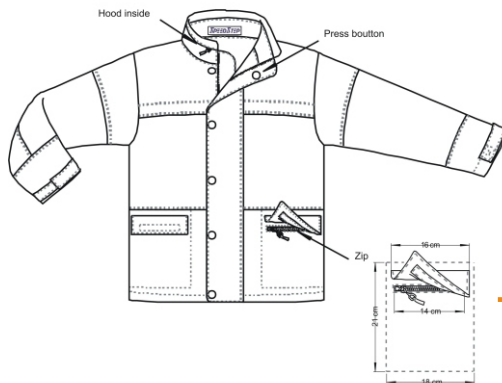
- Powerful and easy to use vector drawing tools
- Drawing lines and curves without interrupting your work
- Adjustable attributes of drawing like line weight, filling color, filling pattern and changing colors
- Special Drawings like mirrored drawing or drawing on masters
- Creating stitch lines, zippers and button facing
- Unique zooming functions with overview window
- Create drawings true to scale
- Twain scanner interface
- Function for transforming pixel graphics to vector graphics



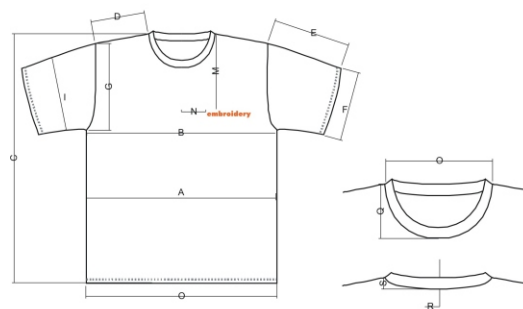
Features

Production drawings

- Add dimensions and labels for integration into size specifications
- Add actual measurements when working in scale
- Faster preparation of size specifications to give you more time to concentrate on your design work
- Fully integrated with **SPEED STEP PDM®**
- Text functions including "Stamps" (Checked, Invoiced, etc.)



Sketch Stitching	Loop width: distance betw. bartacks: Lapseam backyoke: seatseam:	Article:
		Qual:
		Season:
		Size:
		Base:
		Customer:
		Date:
		Note:



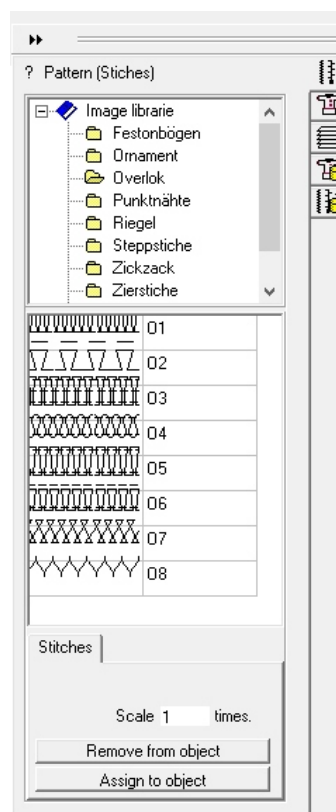
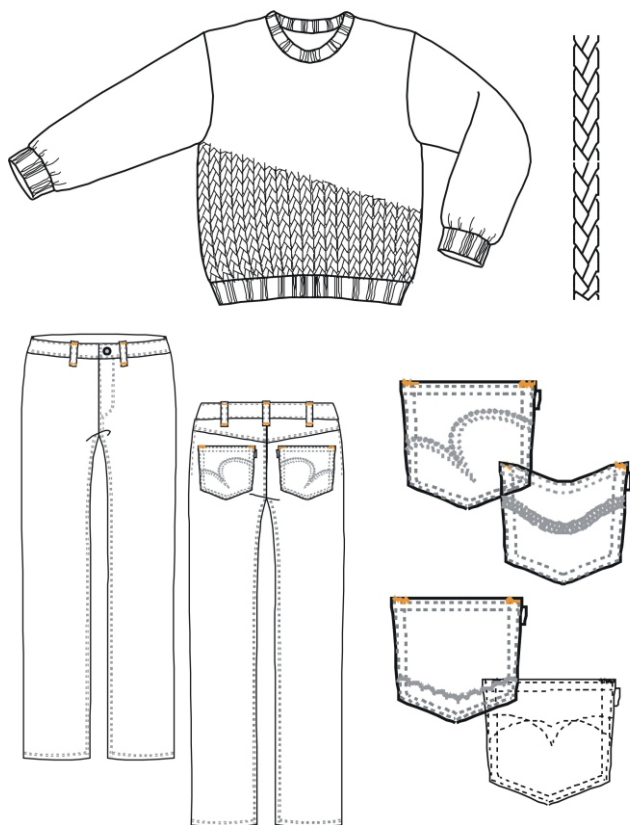
Measurement

Pos.	Description	Sample Size 38
A	1/2 waist	46 cm
B	1/2 chest	46 cm
C	length	60 cm
D	shoulder length	11 cm
E	sleeve length	15 cm
F	1/2 cuff opening	10 cm
G	armhole straight	22 cm
I	1/2 upperarm width	19 cm
M	embroidery position	20 cm
N	embroidery length	10 cm
O	1/2 neckwidth fr. HPS to HPS	12 cm
Q	depth of neck front fr. HPS to HPS	7 cm
R	depth of neck back fr. HPS to HPS	1,5 cm
S	binding height c.b.	2 cm

Features

Style and object libraries

- Easy to use filing system for handling objects and elements based on the Microsoft Office standard
- Create your own style and object libraries
- Integrated libraries for stitches and zippers



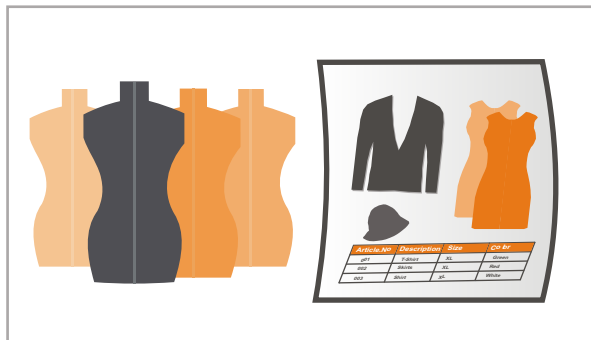
Over 10, 000 satisfied users in over 10 countries using our software products successfully. Take advantage of our solutions for your company's success.

Ask for additional information. Of course, you also get information on the Internet about our products:

www.speedstep.de

Please see information about our other products:

PDM Product Data Management



PLM Product Lifecycle Management



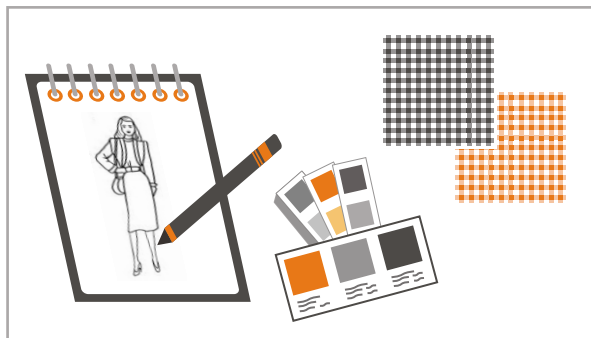
SRM Supplier Relationship Management



Final Inspection



Fashion Design



SPEED STEP

IT solutions for fashion companies GmbH

Raiffeisenstrasse 5f
63110 Rodgau, Germany
Phone: +49 (0) 6106 28 29 0
Fax: +49 (0) 6106 28 29 90
E-Mail: sales@speedstep.de
Web: www.speedstep.de

INDIA OFFICE:

First Floor C 642, Avinashi Road
Lakshmi Mills Junction
Coimbatore 641 037, India
Phone: +91 422 4213030
E-Mail: sales@speedstep.de

Android® and Google Chrome® are registered trademarks or trademarks of Google Inc., all rights reserved, in the United States and/or other countries. Adobe Reader® is a registered trademark or trademark of Adobe Systems Software Ireland Ltd., all rights reserved, in Ireland and/or other countries. Interbase® is a registered trademark or trademark of Embarcadero Technologies Inc., all rights reserved, in the United States and/or other countries. Mozilla Firefox® is a registered trademark or trademark of Mozilla Corporation, all rights reserved, in the United States and/or other countries. Safari® is a registered trademark or trademark of Apple Inc., all rights reserved, in the United States and/or other countries. Microsoft Office 2003-2013®, Microsoft Windows Server 12®, Microsoft Windows 7®, Microsoft Windows 8®, Microsoft Windows 10® and IIS® are trademarks or trademarks of Microsoft Corporation, all rights reserved, in the United States and/or other countries. Speed Step Dimension®, Speed Step Final Inspection®, Speed Step PDM®, Speed Step PLM® and Speed Step SRM® are registered trademarks or trademarks of Speed Step IT solutions for fashion companies Corporation, all rights reserved, in Germany and/or other countries.